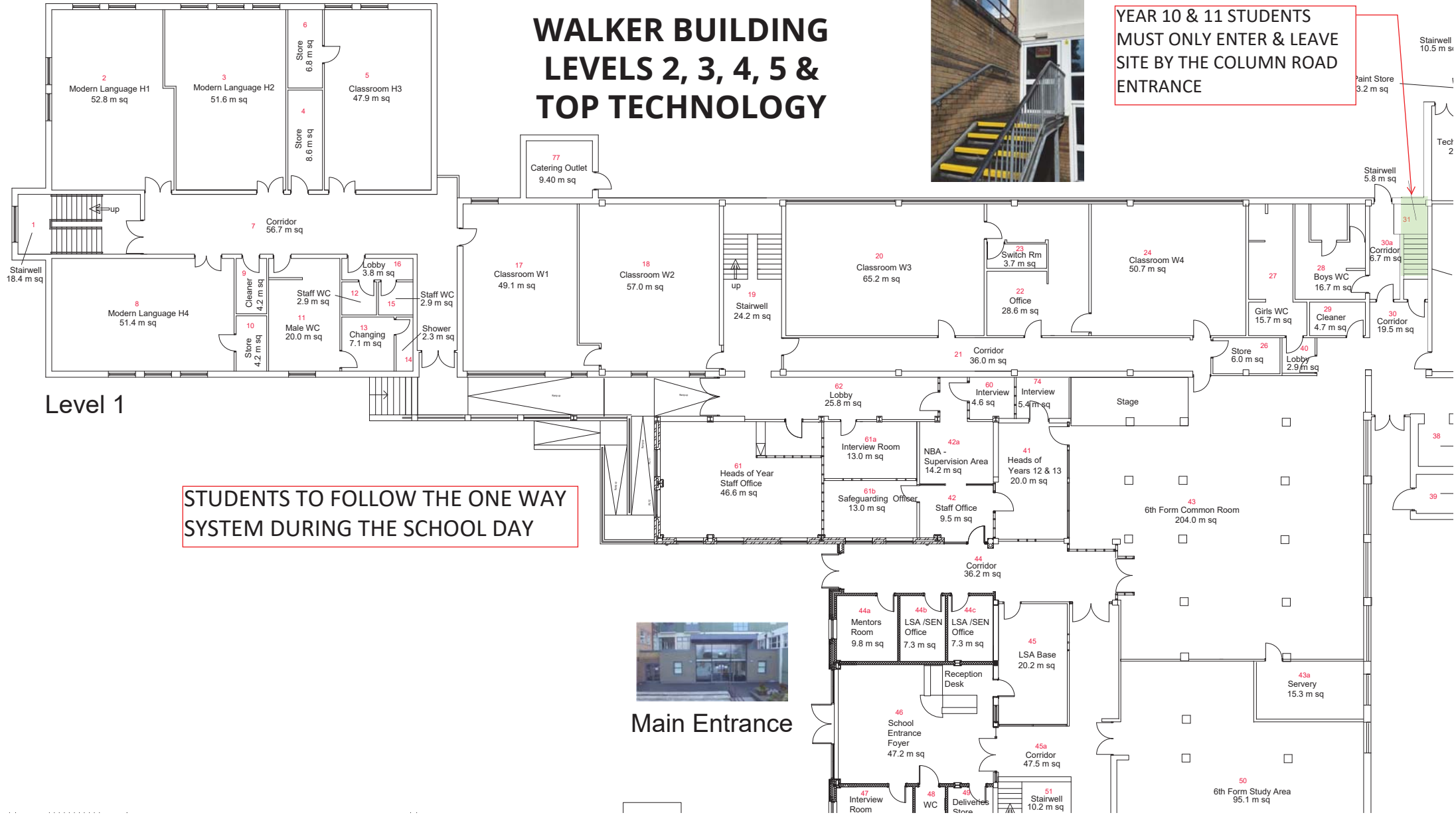


YEAR 10 & 11

WALKER BUILDING LEVELS 2, 3, 4, 5 & TOP TECHNOLOGY



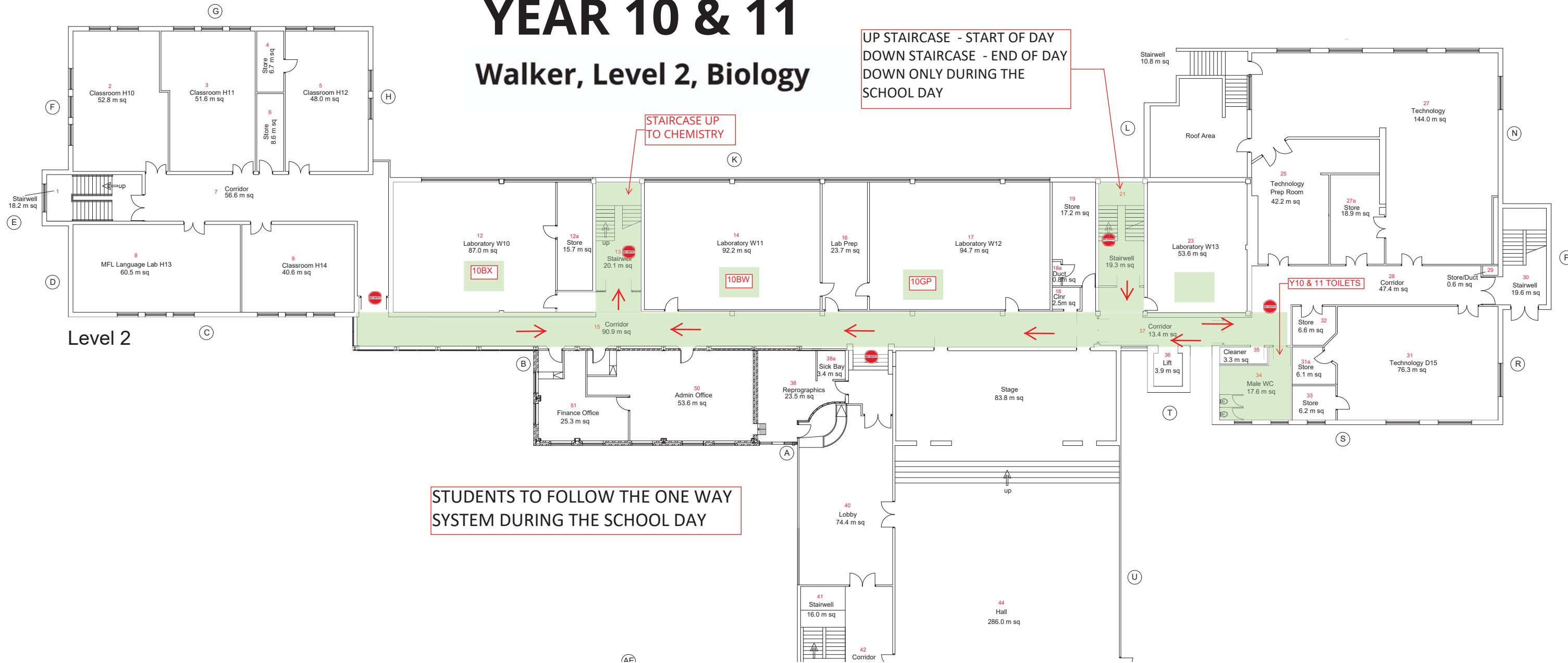
YEAR 10 & 11 STUDENTS
MUST ONLY ENTER & LEAVE
SITE BY THE COLUMN ROAD
ENTRANCE



YEAR 10 & 11

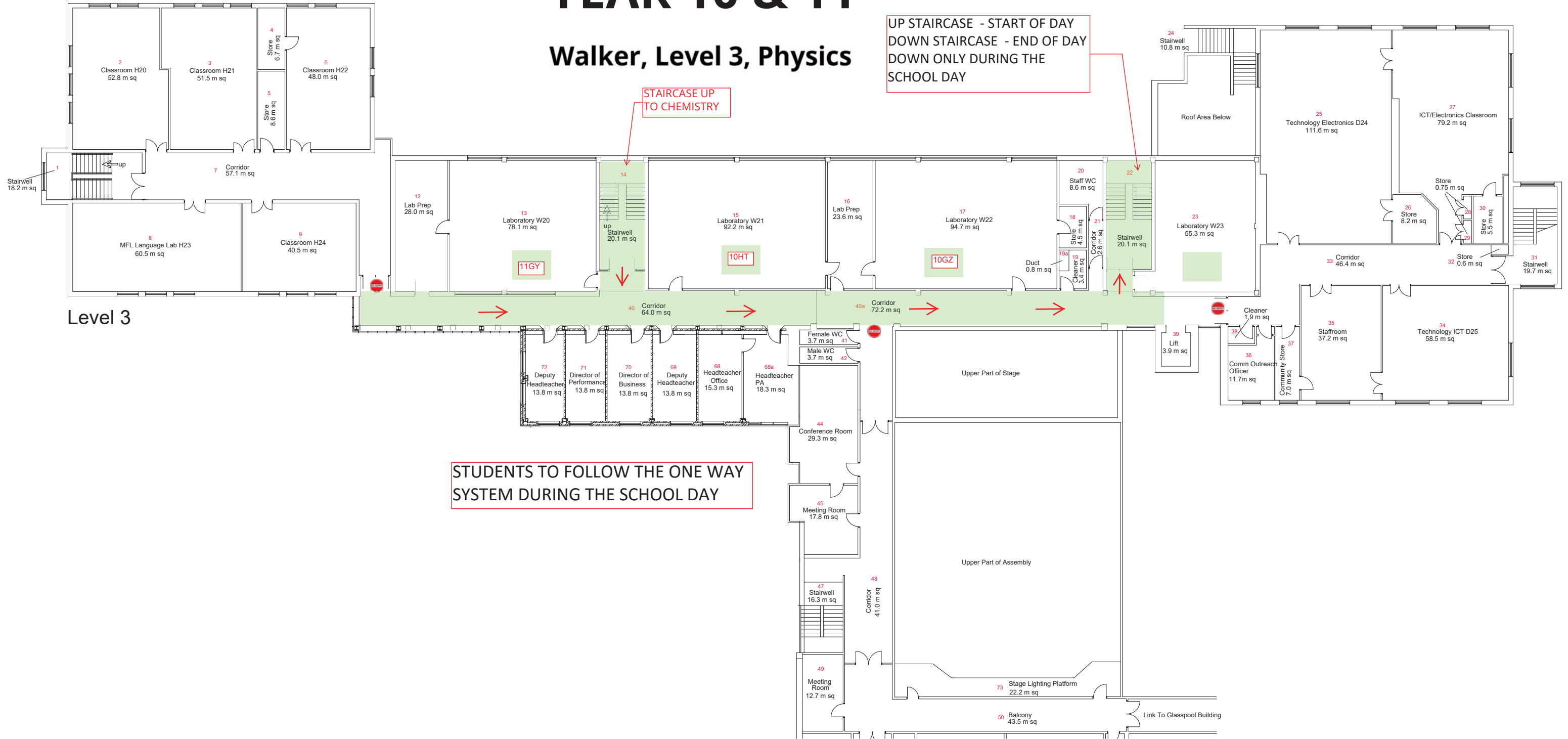
Walker, Level 2, Biology

UP STAIRCASE - START OF DAY
DOWN STAIRCASE - END OF DAY
DOWN ONLY DURING THE SCHOOL DAY



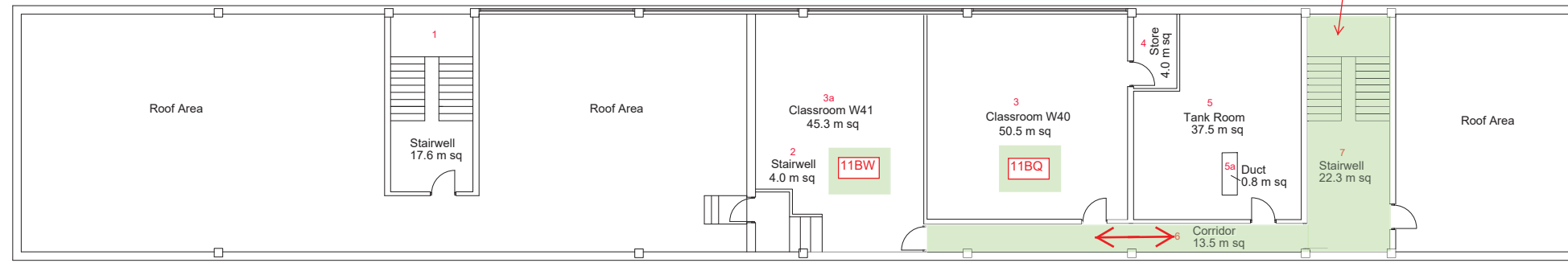
YEAR 10 & 11

Walker, Level 3, Physics



Walker Level 5, RE

YEAR 10 & 11

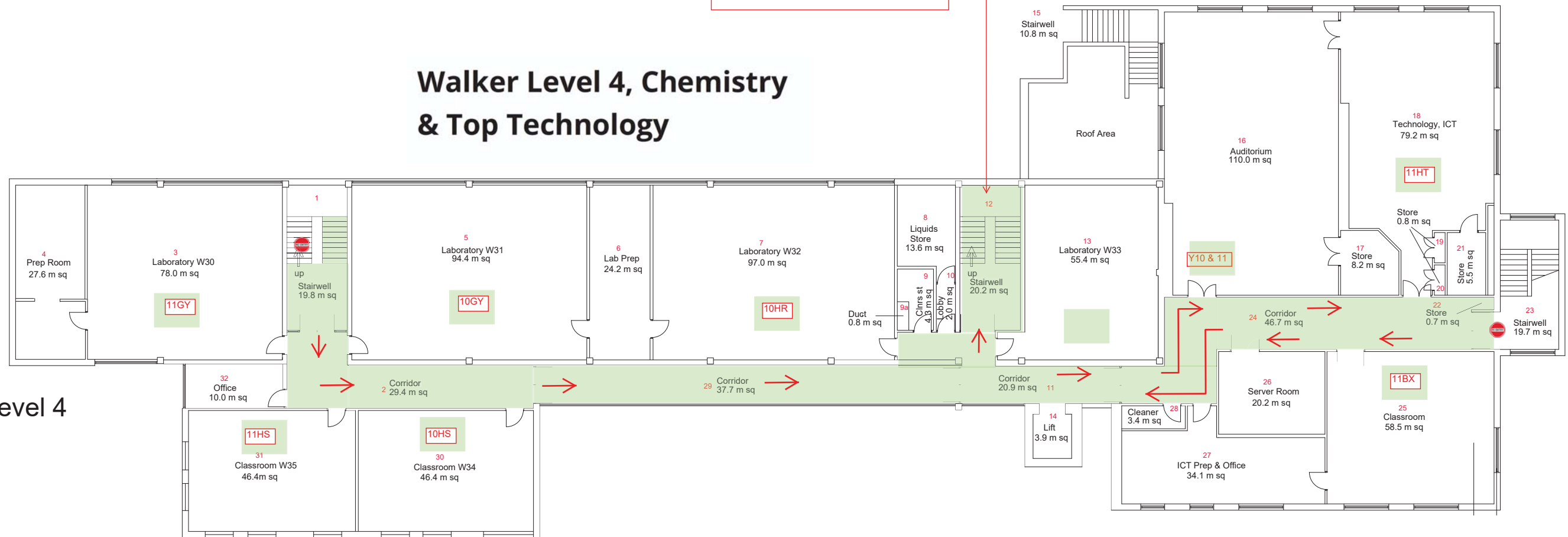


Level 5

STUDENTS TO FOLLOW THE ONE WAY SYSTEM DURING THE SCHOOL DAY

UP STAIRCASE - START OF DAY
DOWN STAIRCASE - END OF DAY
DOWN ONLY DURING THE SCHOOL DAY

Walker Level 4, Chemistry & Top Technology



Level 4