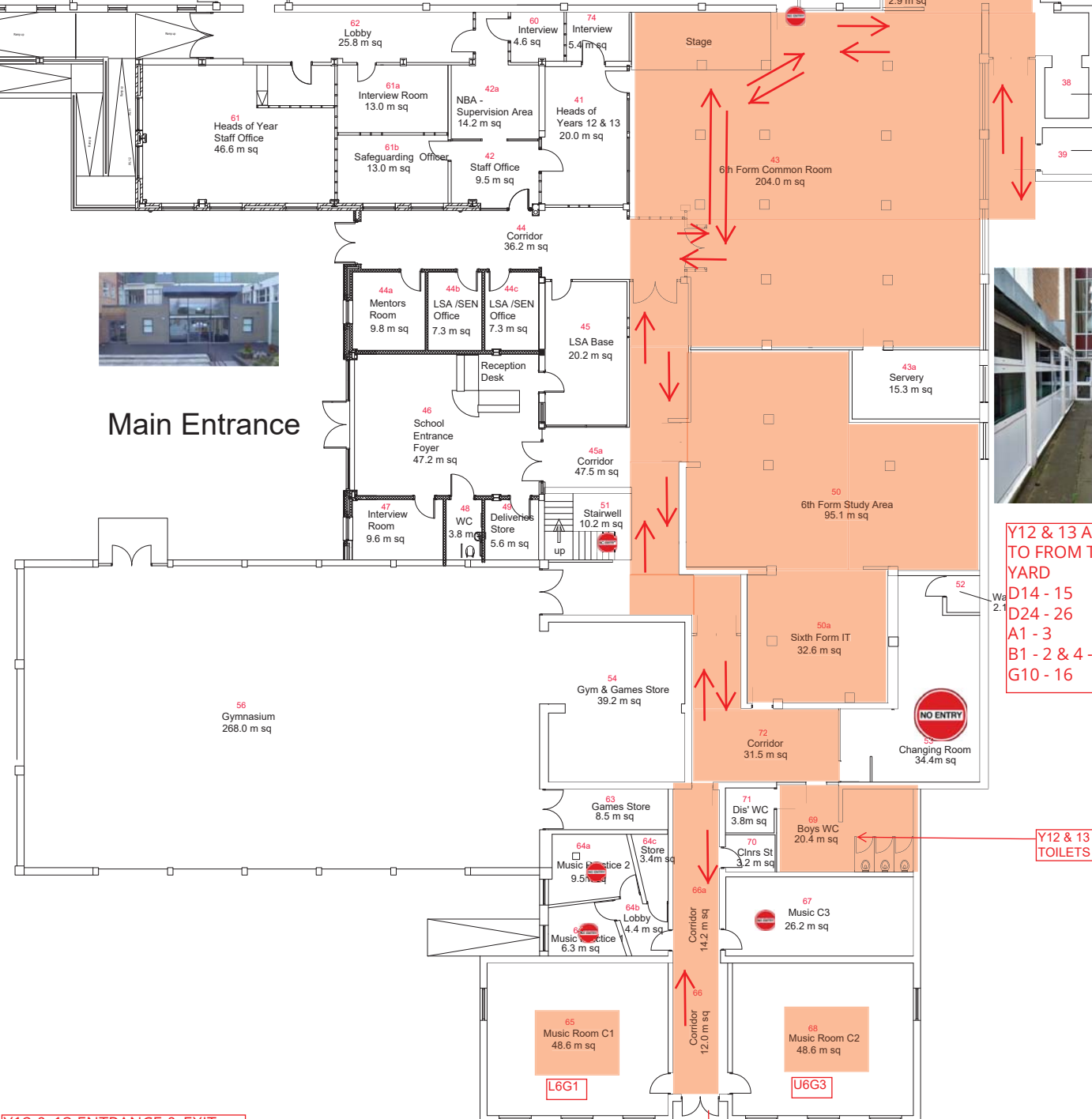


YEAR 12 & 13



Main Entrance



Y12 & 13 ACCESS TO FROM TOP YARD
 D14 - 15
 D24 - 26
 A1 - 3
 B1 - 2 & 4 - 6
 G10 - 16

Y12 & 13 MALE TOILETS

Y12 & 13 FEMALE TOILETS

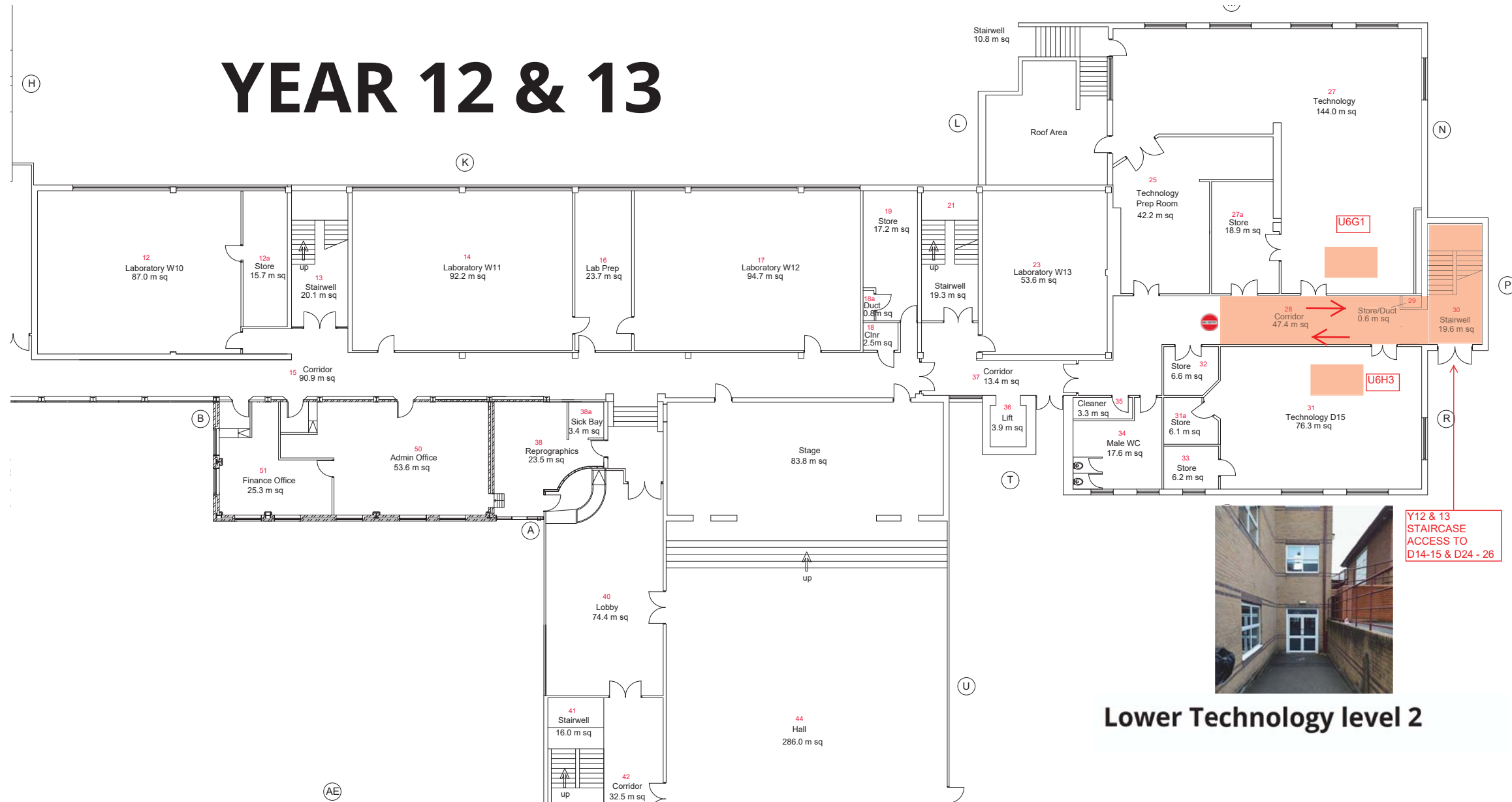


Y12 & 13 ENTRANCE & EXIT. ROUTE TO G8 & 9

L6G1

U6G3

YEAR 12 & 13



Y12 & 13 STAIRCASE ACCESS TO D14-15 & D24 - 26

Lower Technology level 2

YEAR 12 & 13

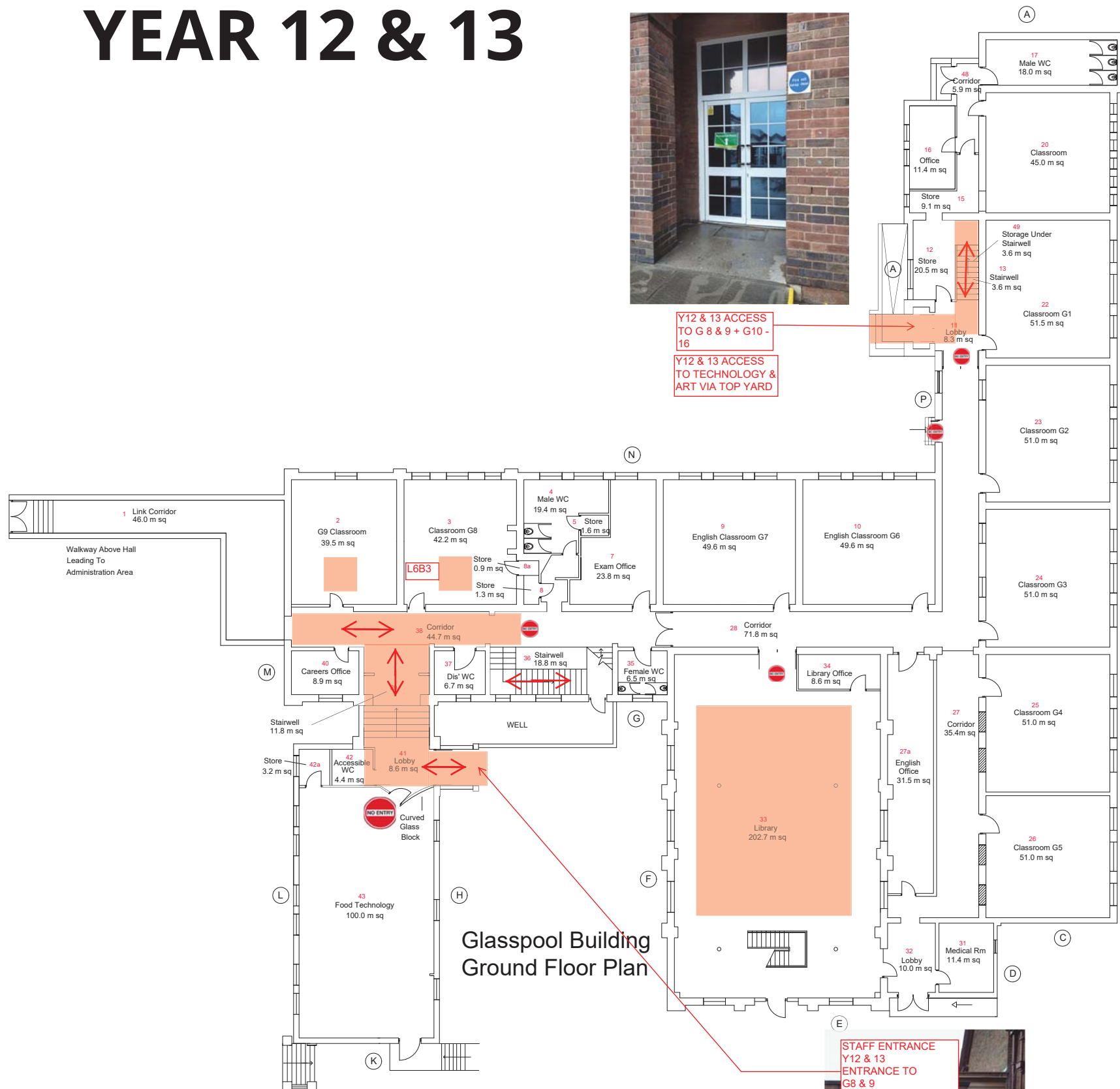


YEAR 12 & 13



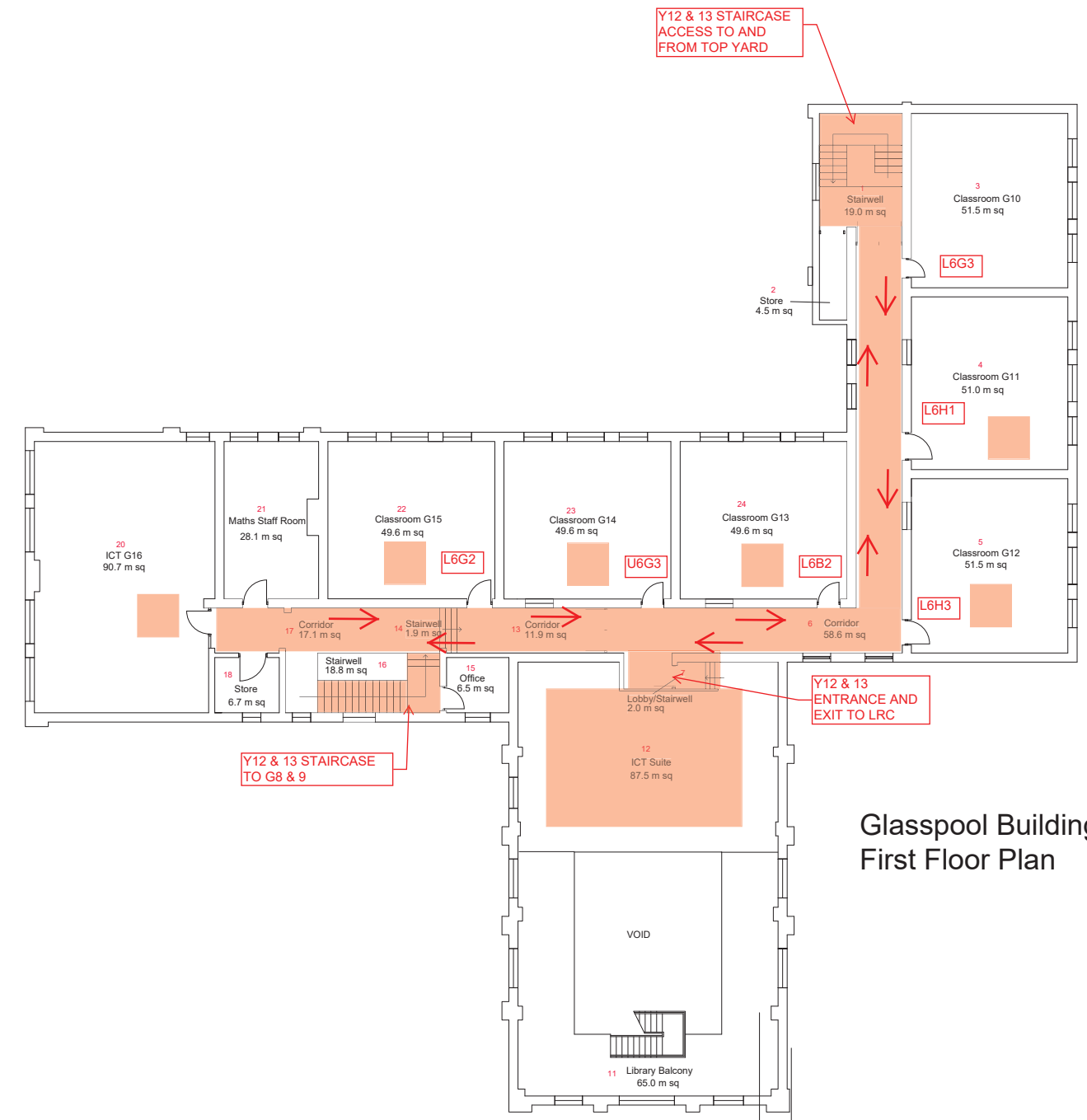
Y12 & 13 ACCESS TO G8 & 9 + G10 - 16

Y12 & 13 ACCESS TO TECHNOLOGY & ART VIA TOP YARD



Glasspool Building Ground Floor Plan

STAFF ENTRANCE Y12 & 13 ENTRANCE TO G8 & 9



Y12 & 13 STAIRCASE ACCESS TO AND FROM TOP YARD

Y12 & 13 STAIRCASE TO G8 & 9

Y12 & 13 ENTRANCE AND EXIT TO LRC

Glasspool Building First Floor Plan

YEAR 12 & 13

Art & Drama Building Ground Floor GIA 393.0 m sq

